

WALL OPENINGS

THE COMPLETE SOLUTION

Logix Pro Buck™



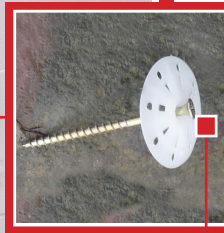
▪ **Concrete anchors every 8" o/c –**

To ensure a solid connection to the concrete wall

These anchors also provide a chair for horizontal rebar placement.

▪ **Enables easy, void-free concrete placement under the opening.**

Foam-only areas for 4" access holes

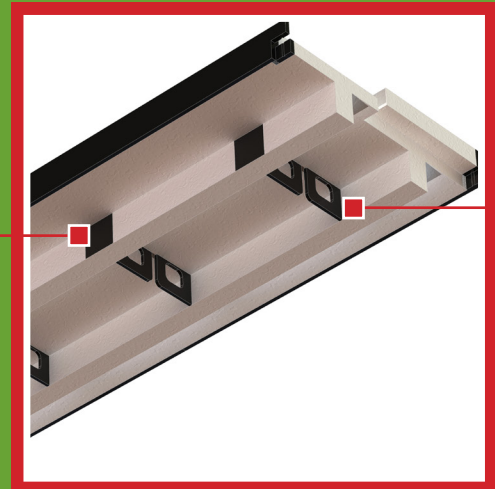


▪ **Strong, secure, reliable fastening –**

High-strength exposed furring strips

▪ **Fast picture framing to the internal flanges every 8" o/c –**

That does not have to be removed for finishing!

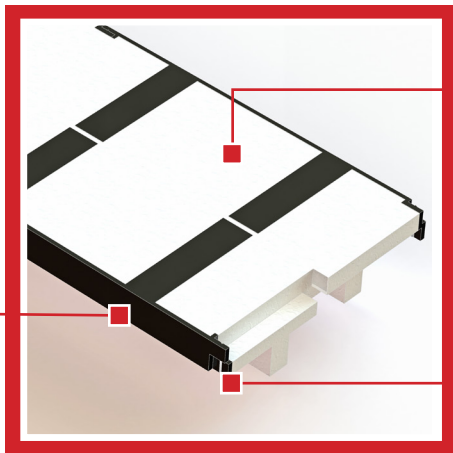


▪ **Strong & dependable insulating form –**

High-density 2lb foam

▪ **Minimal waste –**

Leftover pieces securely clip together end-to-end, generating minimal waste



WATCH THE VIDEO